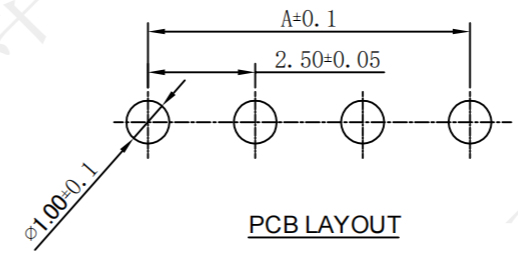
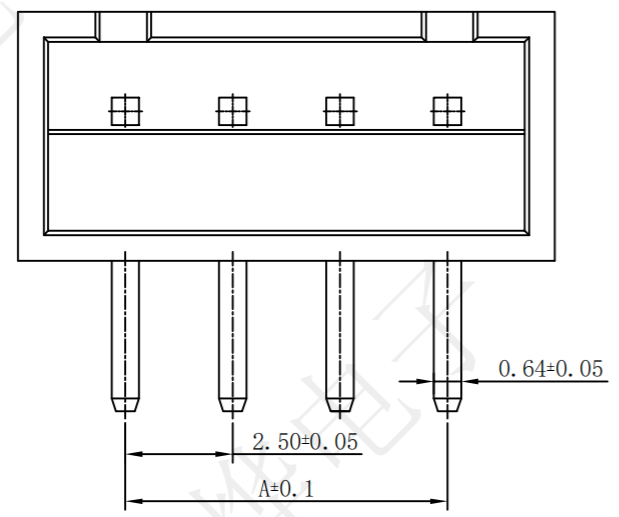
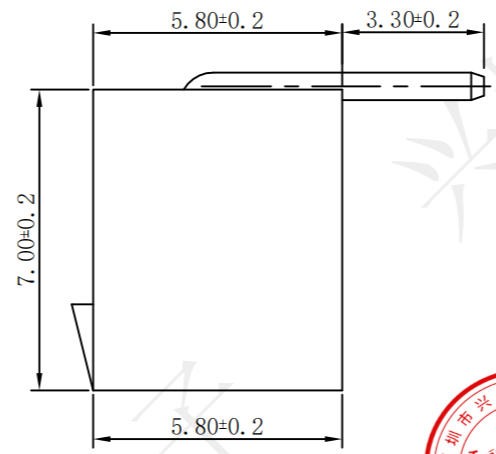
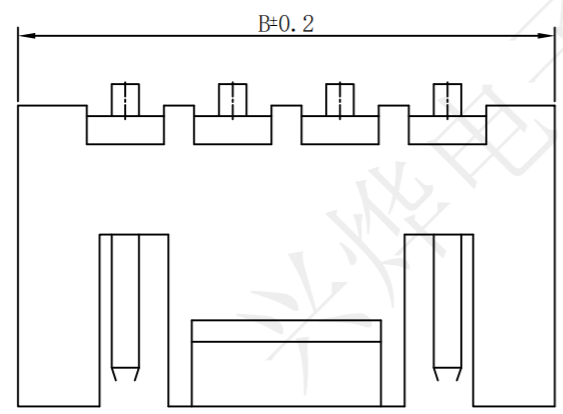


REV.	ECN NO.	DESCRIPTION	DRAW	APPD.	DATE
A	---				

受控文件

Operating temperature: -25℃~85℃
 Rated loading: 3A 250V AC, DC
 Contact resistance: 20mΩ Max
 Insulation resistance: 1000MΩ Min
 Withstanding voltage: AC 1000V (50HZ)/min
 Material: PA9T
 PIN brass Tin-plated



PIN数	料号	尺寸	
		A	B
2P	CZB15233	2.50	7.50
3P	CZB15234	5.00	10.00
4P	CZB15235	7.50	12.50
5P	CZB15236	10.00	15.00
6P	CZB15237	12.50	17.50
7P	CZB15238	15.00	20.00
8P	CZB15239	17.50	22.50
9P	CZB15240	20.00	25.00
10P	CZB15241	22.50	27.50
11P	CZB15242	25.00	30.00
12P	CZB15243	27.50	32.50
13P	CZB15244	30.00	35.00
14P	CZB15245	32.50	37.50
15P	CZB15246	35.00	40.00

深圳市兴烨电子有限公司
 Shenzhen XingYe Electronics co., Ltd

Series Name :
 XH-nAW带扣米黄色

TOLERANCE		
.XX ±0.30	X.° ±2°	APPD: 陈爱光
.XX ±0.20	x° ±1°	CHEd: 施立敏
.XXX ±0.10	.XX° ±0.5°	DRAW: 马洪飞
UNITS	mm	

Product Name :		
Part NO:		
	SCALE	SHEET
	1:1	1/1
		REV.
		A1