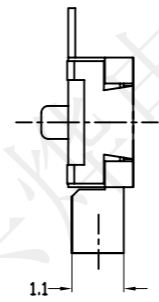
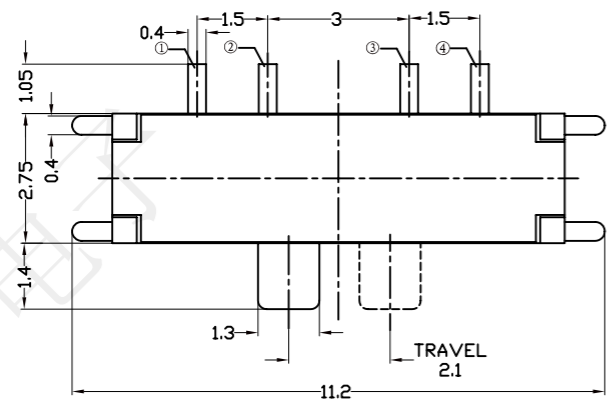
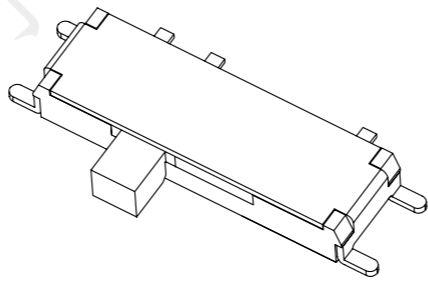
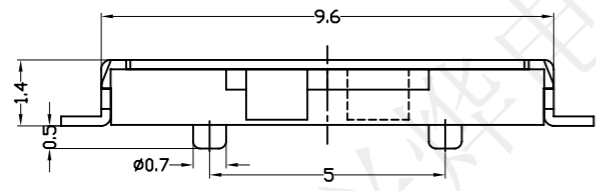
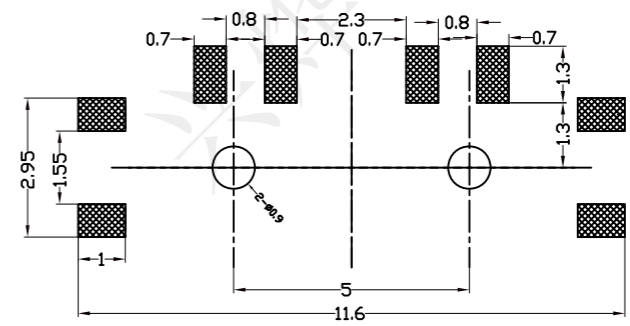


受控文件

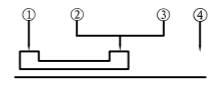
REV.	ECN NO.	DESCRIPTION	DRAW	APPD.	DATE
A	---				

**P. C. B MOUNTING PATTERN DIMENSION**

the following soldering are recommended for reflow soldering



**CIRCUIT DIAGRAM**



**SPECIFICATION:**  
 Operating temperature: -20°C~85°C  
 Rated loading: DC 4V 0.3A  
 Contact resistance: 70mΩ Max  
 Insulation resistance: 100MΩ Min  
 Withstanding voltage: AC 250V (50Hz) /min  
 Electrical Life: 10000 cycles

NO	Part Name 名称	QT'Y 数量	Material 颜色	Specification 材质
1	盖板	1	银白色	黄铜镀银
2	手柄	1	黑色	PPA
3	簧片	1	银白色	铍青铜镀银
4	铁丝	1	本色	不锈钢
5	基座	1	黑色	LCP
6	端子	1	银白色	磷铜镀银

**深圳市兴烨电子有限公司**  
 Shenzhen XingYe Electronics co., Ltd

TOLERANCE		APPD: 陈爱光
X.X ±0.30	X.' ± 2'	CHEd: 施立敏
.XX ±0.20	.X' ± 1'	DRAW: 马洪飞
.XXX ±0.10	.XX' ±0.5'	
UNITS	mm	

Series Name :			
Product Prescription : MSK-13C01迷你八脚二档柄长1.4脚贴编带			
Part NO: SKL20049			
	SCALE	SHEET	REV.
	1:1	1/1	A1