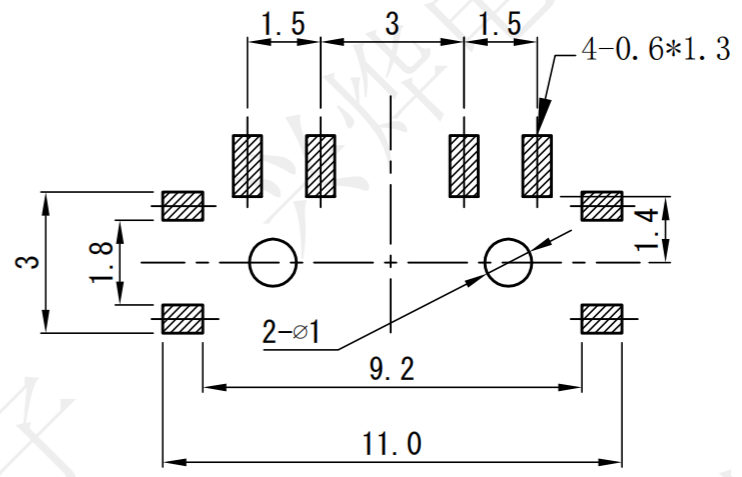
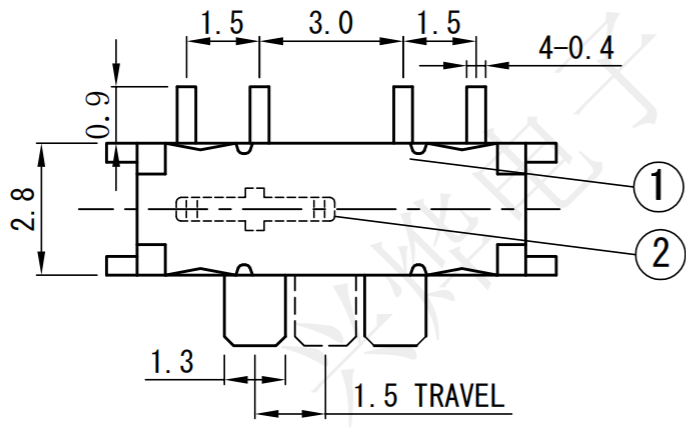
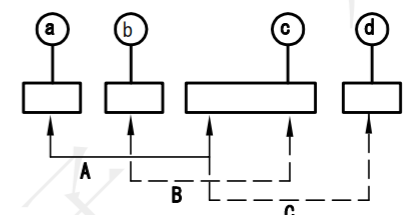
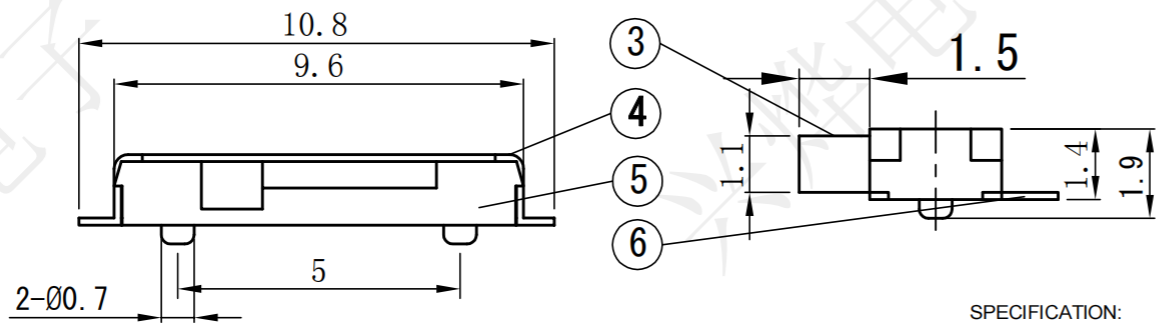


REV.	ECN NO.	DESCRIPTION	DRAW	APPD.	DATE
A	---				



P.C.B LAYOUT DIMENSION
TOP VIEW



CIRCUIT

SPECIFICATION:
 Operating temperature: -20°C~85°C
 Rated loading: DC 12V 0.1A
 Contact resistance: 80mΩ Max
 Insulation resistance: 100MΩ Min
 Withstanding voltage: AC 500V (50-60Hz) /min
 Electrical Life: 10000 cycles

受控文件

6	TERMINALS	C2680	4	Ag
5	BOTTOM	PA46	1	BLACK
4	COVER	SUS	1	Ag
3	STEM	PA46	1	BLACK
2	CONTACT	C5210	1	Ag
1	STRETCH PIECE	SUS	1	NATURAL
NO.	PARTS	MATERIAL	QTY.	FINISHING

深圳市兴烨电子有限公司
 Shenzhen XingYe Electronics co., Ltd

TOLERANCE		APPD: 陈爱光
X.X ±0.30	X.' ± 2'	CHED: 施立敏
.XX ±0.20	.X' ± 1'	
.XXX ±0.10	.XX' ±0.5'	DRAW: 马洪飞
UNITS	mm	

Series Name :		
Product Prescription : MSK-13C01八脚卧贴		
Part NO: SKL10040		
SCALE	SHEET	REV.
1:1	1/1	A1